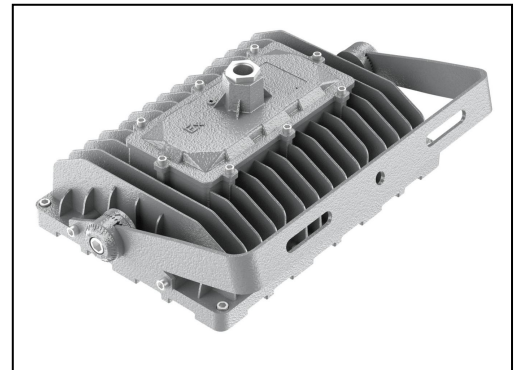
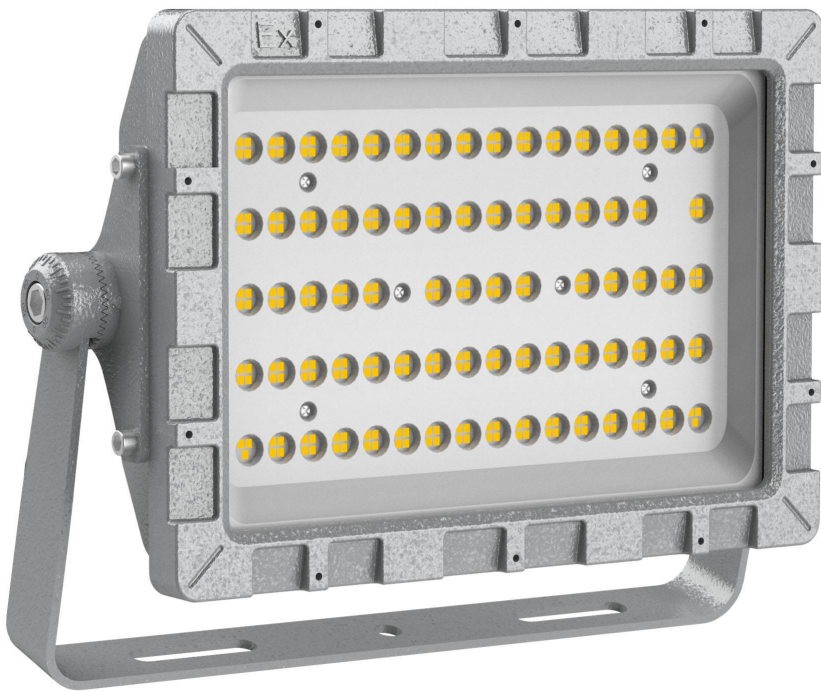




Product Specifications

(Ex LED FLOOD LIGHT)



Features

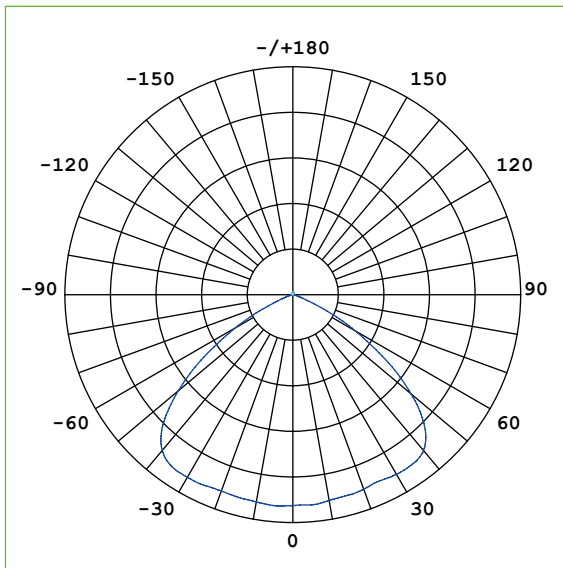
- Packed with branded LEDs and power supply, to ensure the product reliability and life expectancy with 5 years warranty;
- Adopt dust and waterproof structure design, waterproof level IP66;
- High-duty die-cast aluminum housing and tempered glass cover, fully sealed to be dirt and bug proof;
- Various of installation methods, easy install and using.

Technical Specifications

Model No.	LGS-EXFL-50W	LGS-EXFL-75W	LGS-EXFL-100W	LGS-EXFL-150W	LGS-EXFL-200W	LGS-EXFL-240W
Power	50W	75W	100W	150W	200W	240W
Lumen Output	7,000lm	10,500lm	14,000lm	21,000lm	28,000lm	33,600lm
Lumen Efficiency	140lm/w					
CCT	3000/4000/5000/5700/6500K					
CRI	Ra>80(Ra>90 optional)					
Chip Brand	Lumileds					
Beam Angle $\theta/2$	120°					
Light Decay Rate	Less than 3% in 6,000Hours					
Lifespan	≥50,000Hrs					
Input Voltage	100-240VAC 50/60Hz					
Power Factor	PF>0.95					
THD	<10%					
Driver Brand	Sosen/Suncom					
Material	Aluminum Housing+Tempered Glass Cover					
Degree of Protection	IP66 & IK08					
Electrical System	Ex de mb IIC/IIB T4/T6:Ex tD A21IP65 T95°C					
Anti-Corrosion Grade	WF2					
Dimensions	304*170*128mm	382*230*141mm		522*310*145mm		
Package	1pcs/CTN					
Gross Weight(KG)	5.5kg	7.7kg		13kg		
Cartoon Size	360*265*195mm	435*330*205mm		575*400*210mm		
Finish	Grey					
Installation	Hanging/Mounting					
Working Temperature	-30°C~+50°C					
Storage Temperature	-40°C~+70°C					
Certificate	ATEX, CE, RoHS					
Warranty	5 years					
Optional Functions	0-10V/PWM/DALI Available on Request					

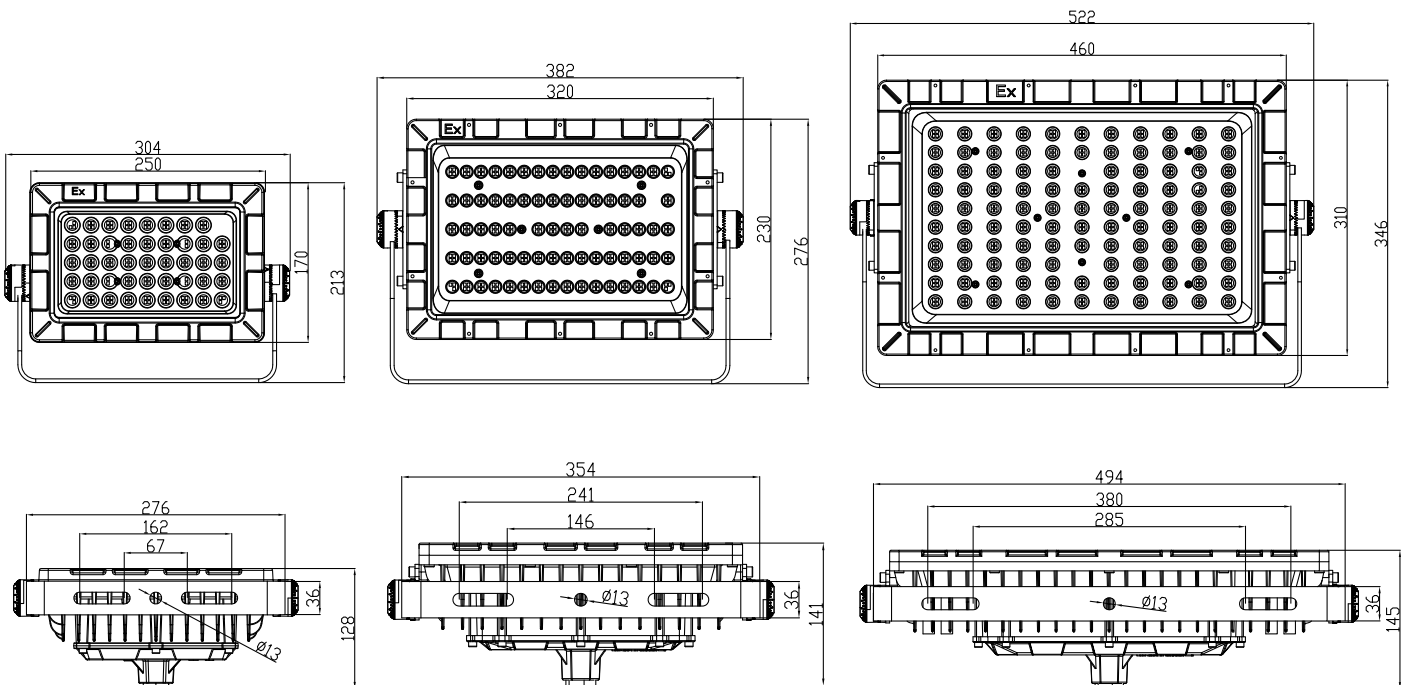
Light Distribution

120°/High Efficacy LED Source



Dimensions and Drawings

Unit: mm

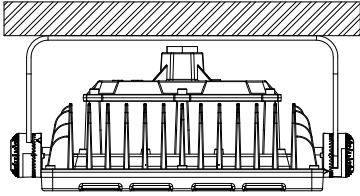


50W/75W

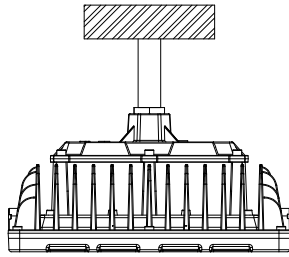
100W/150W

200W/240W

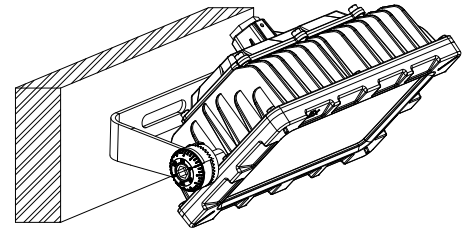
Installations



Ceiling Mounted



Rod Mounting



Wall Mounted

Installation Requirements

1. Power off before installation, and read the instruction carefully;
2. Make sure the installation material can endure the lamp weight;
3. Connect lamp wire to match power wire, and seal the joint with insulation;
4. The lamp must be installed reliably to prevent loosening and falling off.

Notice

1. Please first read the product specification carefully, make sure the using environment conform to specification, then it can be used;
2. Please confirm the input voltage, frequency before use;
3. This product must be installed by professionals;
4. If there is any damage to the power wire or shell of the product, it should be taken as defective product and do not use;
5. Dangerous high voltage, non-professionals are not allowed to maintain the product;
6. If external soft cable or soft wire of the light is damaged, it should be replaced by manufacturer or service agent or personnel with similar qualification to avoid danger.