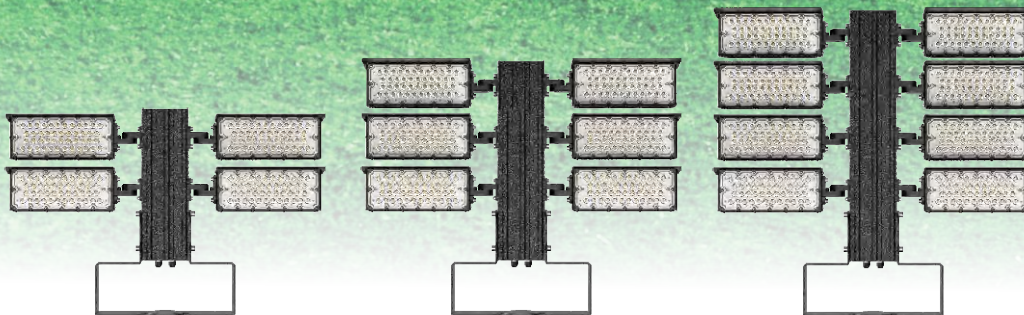




TRANSFO LED HIGH MAST FLOODLIGHT

Modulars Horizontal/Vertical Adjustable
600W/900W/1200W



The Transfo LED High Mast Light is a versatile and durable lighting solution designed for demanding outdoor environments. Crafted with fin rivet aluminum heat sinking and optimized through advanced Finite Element Analysis, it ensures superior thermal management and rapid heat dissipation. The lighting module can rotate both vertically and horizontally, providing maximum customization to suit various applications.

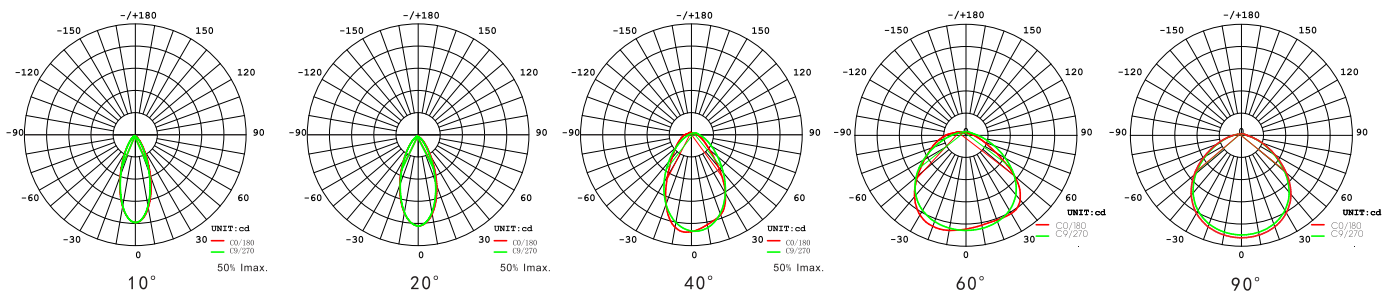
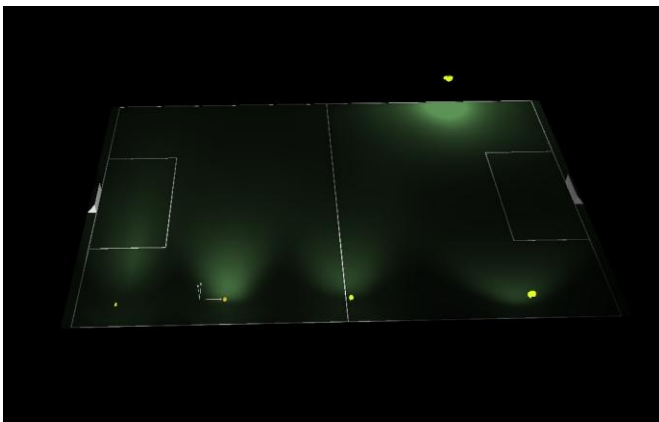
Equipped with anti-UV optical lenses with over 94% light transmittance and professional light distribution options, the Transfo delivers precise illumination with different beam angles. Built with top-quality branded LEDs and reliable power supply, it promises longevity and reliability, backed by a 5-year warranty. Featuring an IP66 waterproof design and dual surge protection (driver & 10KV SPD), it's ideal for outdoor use. Additionally, the spill shield minimizes light pollution, making it an eco-friendly choice for large-scale projects.



Features

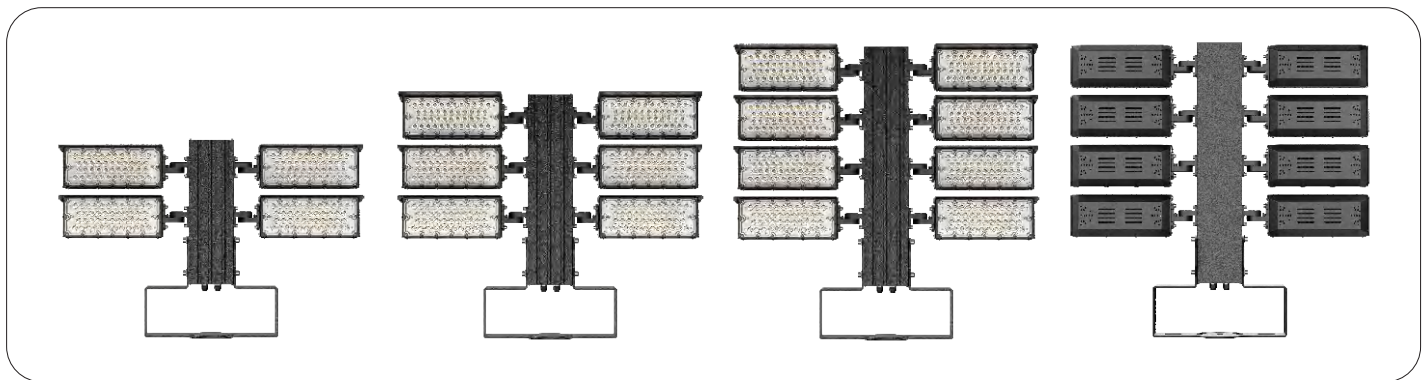
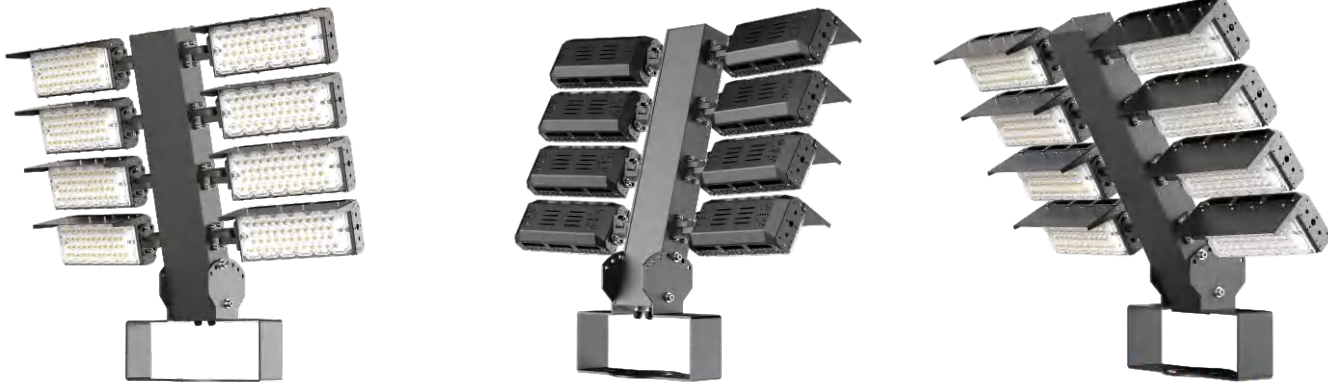
- Fin rivet aluminum heat sinking with advanced Finite Element Analysis ensures optimized thermal management and rapid heat dissipation;
- Lighting module is rotate directionally in both vertical and horizontal providing maximum customizations;
- Anti UV optical lens, light transmittance > 94%, professional light distribution with different beam angles for various applications;
- Packed with reputed brand top quality LEDs and power supply to ensure the product reliability and life expectancy, 5 years warranty;
- IP66 structural waterproof design; Double surge protection: driver & extra 10KV SPD;
- Spill shield to reduce light pollution.

Light Distributions



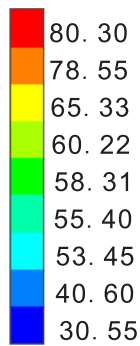
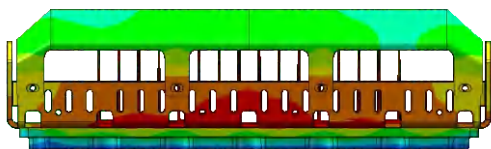
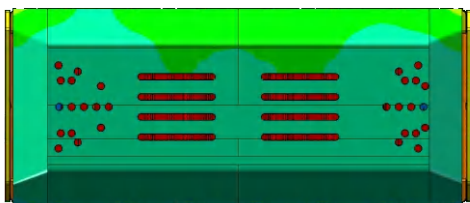
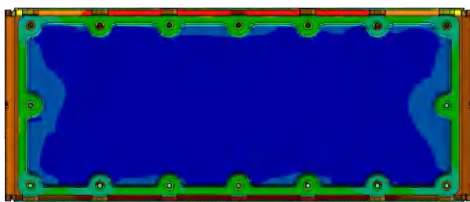
Technical Specifications

Model No.	LGS-GSTF-600W	LGS-GSTF-900W	LGS-GSTF-1200W
Power	600W	900W	1200W
Lumen Output	90,000lm	135,000lm	180,000lm
Lumen Efficiency	150lm/w		
CCT	3000/4000/5000/5700/6500K		
CRI	Ra>80(Ra>90 optional)		
Chip Brand	Lumileds		
Beam Angle $\theta/2$	10°/20°/40°/60°/90°		
Light Decay Rate	Less than 3% in 6,000Hours		
Lifespan	≥50,000Hrs		
Input Voltage	100-240VAC 50/60Hz		
Power Factor	PF>0.95		
THD	<15%		
Driver Brand	Meanwell/Philips/Inventronics/Sosen		
Material	Die-cast Aluminum Housing+Polycarbonate Lens		
Degree of Protection	IP66		
Dimensions	900*575*165mm	900*725*165mm	900*874*165mm
Net Weight	14.5kg	20.3kg	25.5kg
Package	1pcs/CTN		
Gross Weight	15.6kg	21.8kg	27.2kg
Carton Dimensions	480*450*490mm	630*450*490mm	780*460*490mm
Finish	Black		
Installation	Mounting		
Working Temperature	-30℃~+50℃		
Storage Temperature	-40℃~+70℃		
Certificate	CE, RoHS		
Warranty	5 years		
Optional Functions	0-10V/PWM/DALI/DMX Available on Request		

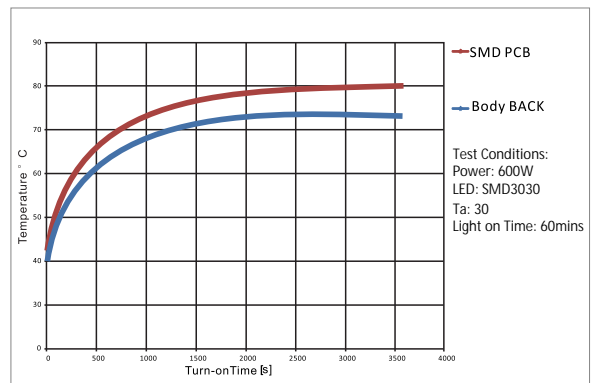


Thermal Management

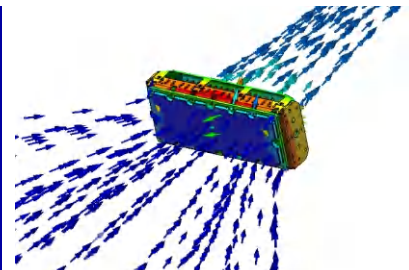
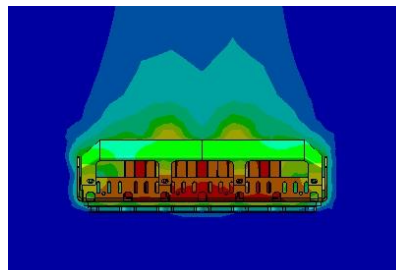
Use advanced Finite Element Analysis technology to optimize product heat dissipation structure design. The luminaire has excellent thermal management control, with a small internal and external temperature difference, uniform heat distribution, and high lumen maintenance rate.



Unit: °C



Temperature rise curve



Spill shield design to prevent light pollution and preserve a clean night sky.

Large power compartment, packed with branded drivers, supporting high power, long lifespan, and stable performance.

Thermal-electrical Independent

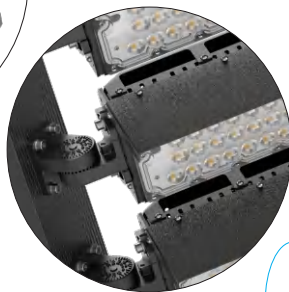
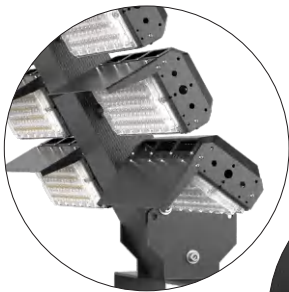
High thermal conductivity aluminum PCB with branded SMD5050 LEDs for high brightness and long lifespan.

The heat sink adopts an air convection structure, with separate hot and cold components for easy disassembly. This ensures faster and better heat dissipation, significantly extending the lifespan.

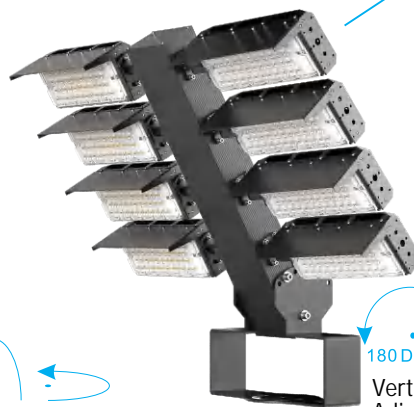
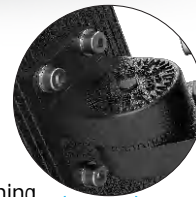
TIR optical lens, UV-resistant, no yellowing over time, ensures uniform light output without scattering.

Strong bracket allows precise angle adjustment up to 90°, secured with screws, resistant to strong winds and corrosion.

Module can be adjusted vertically or horizontally, allowing precise light distribution in targeted areas. (Each individual module can be adjusted.)



Precision adjustment gears for fine-tuning.



Each module can be adjusted up to 90 degrees.

90 Degree

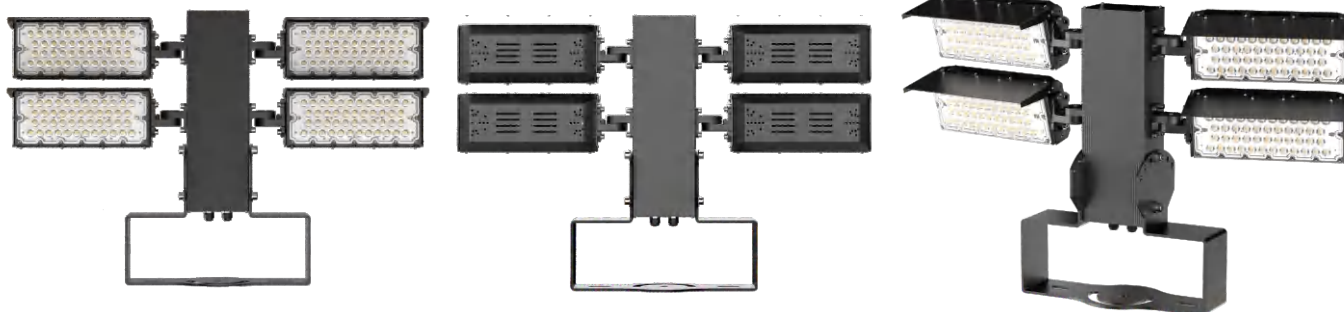
180 Degree

Vertical Adjustment

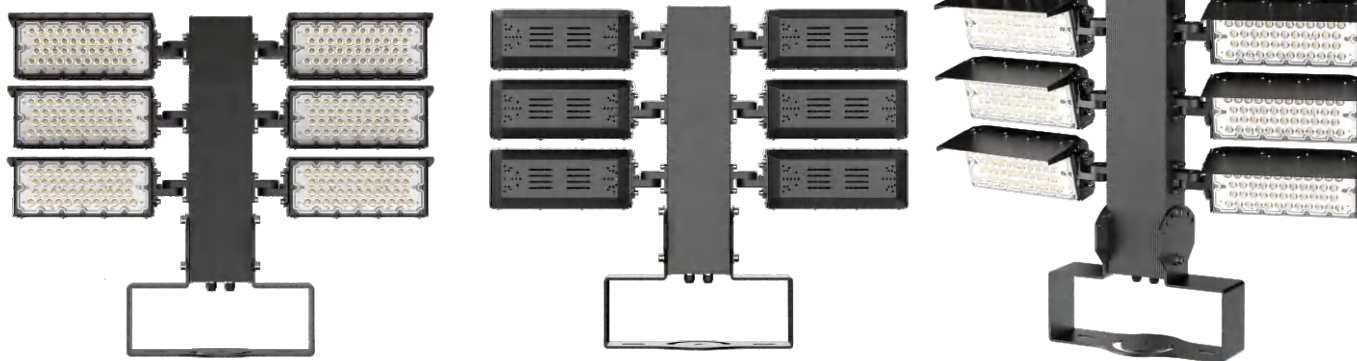
90 Degree

Horizontal Adjustment

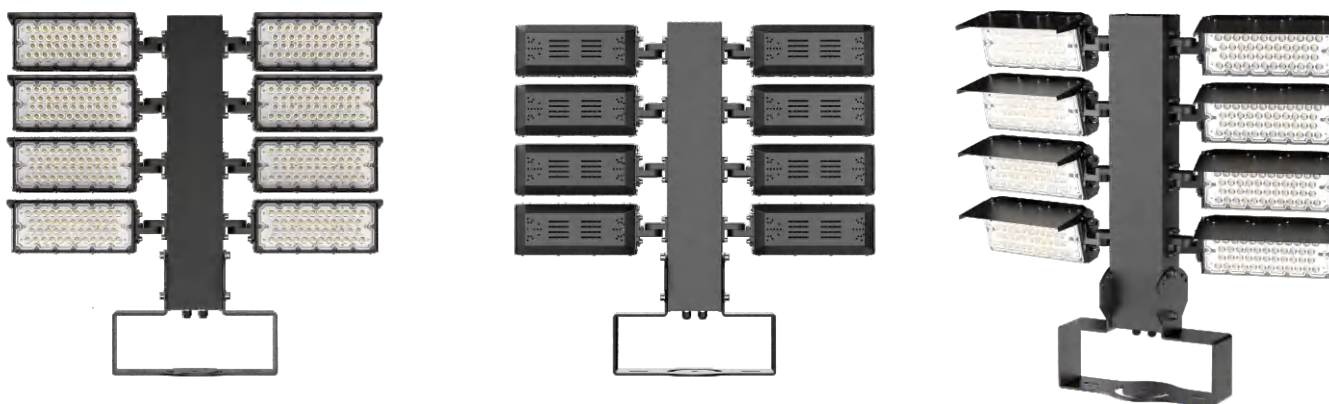
600W



900W

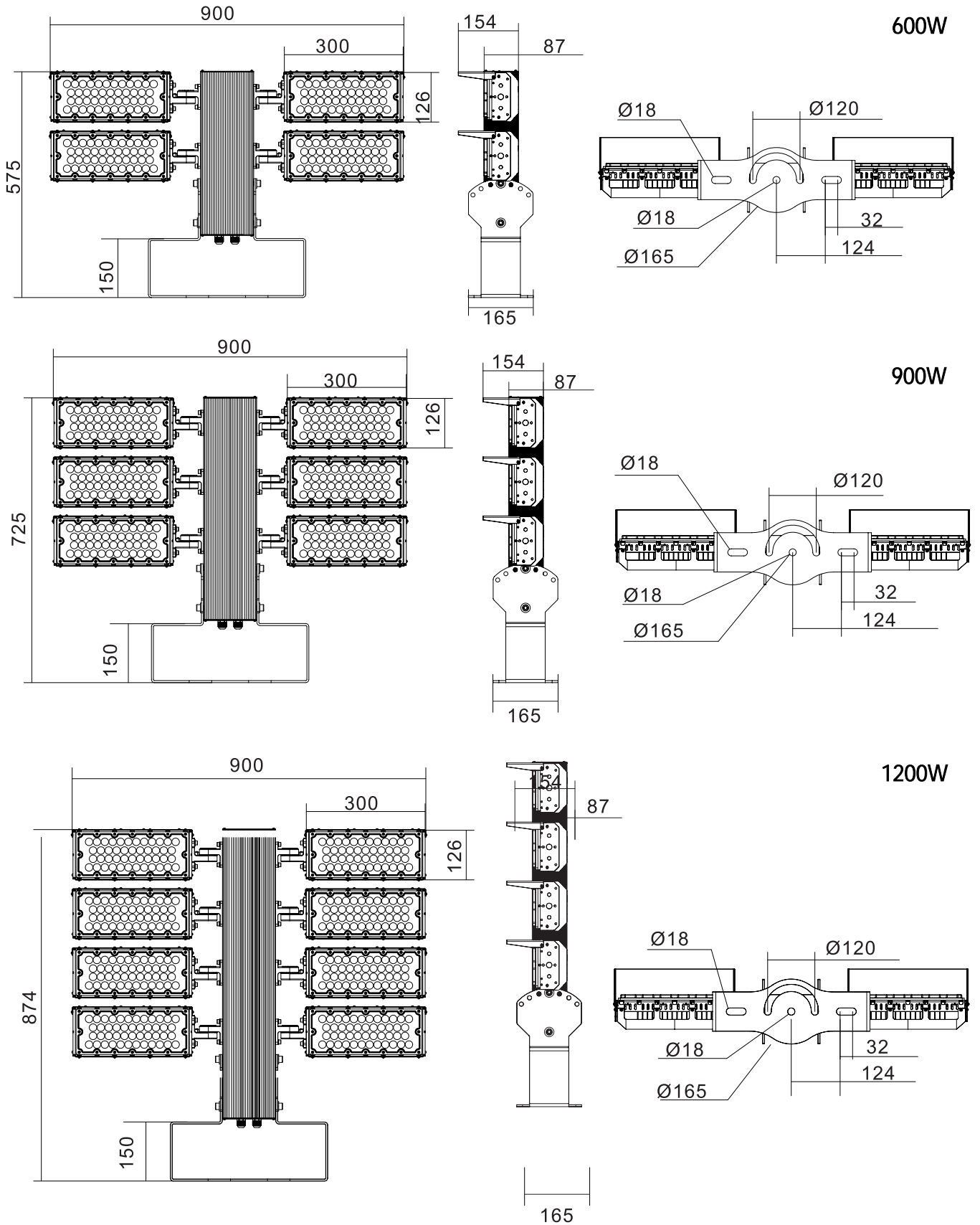


1200W

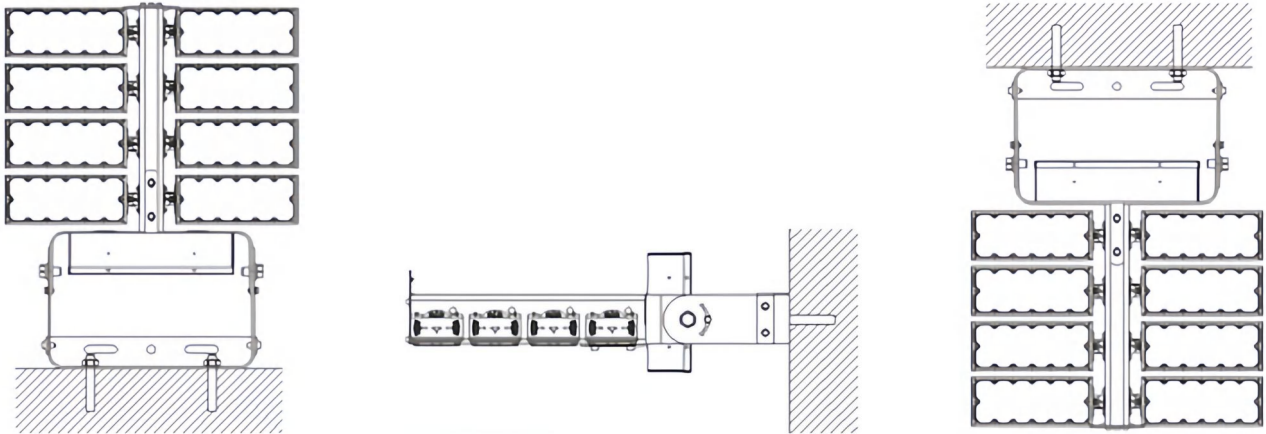


Dimensions

Unit: mm



Installations



Installation Requirements

1. Power off before installation, and read the instructions carefully;
2. Make sure the installation material can endure the lamp weight;
3. Please prepare two sets of expansion bolts, and drill holes in the installation body, then install the lamp, finally screw down expansion bolts and bracket screws;
4. Connect lamp wire to match power wire, and seal the joint with insulation;
5. The lamp must be installed reliably to prevent loosening and falling off.

Notice

1. Please first read the product specification carefully, make sure the using environment conform to specification, then it can be used;
2. Please confirm the input voltage, frequency before use;
3. This product must be installed by professionals;
4. If there is any damage to the power wire or shell of the product, it should be taken as defective product and do not use;
5. Dangerous high voltage, non-professionals are not allowed to maintain the product;
6. If external soft cable or soft wire of the light is damaged, it should be replaced by manufacturer or service agent or personnel with similar qualification to avoid danger.

Applications

Widely used in outdoor places, can be installed in large sports centers, docks, airports, tower cranes, high masts, etc...

